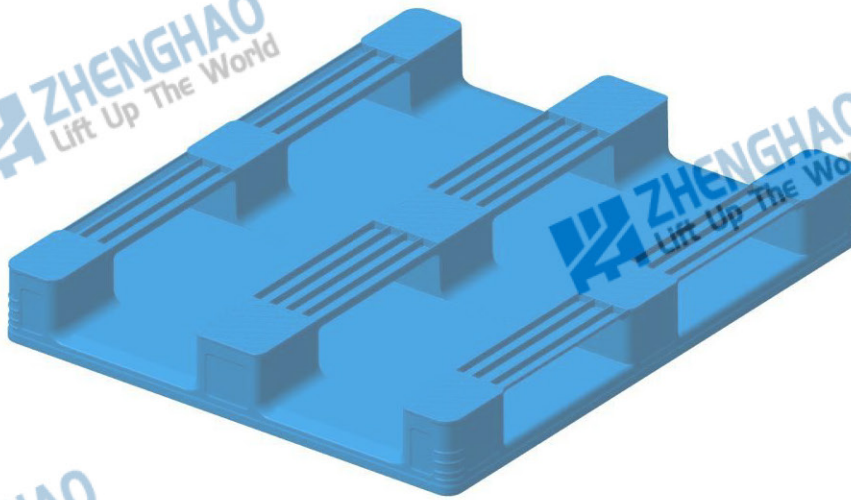
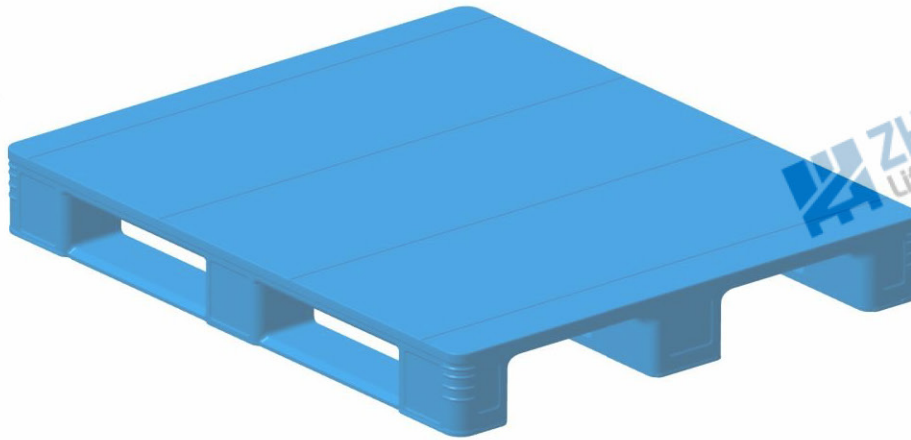


## 1210150 Introduction of Hygienic Plastic Pallet

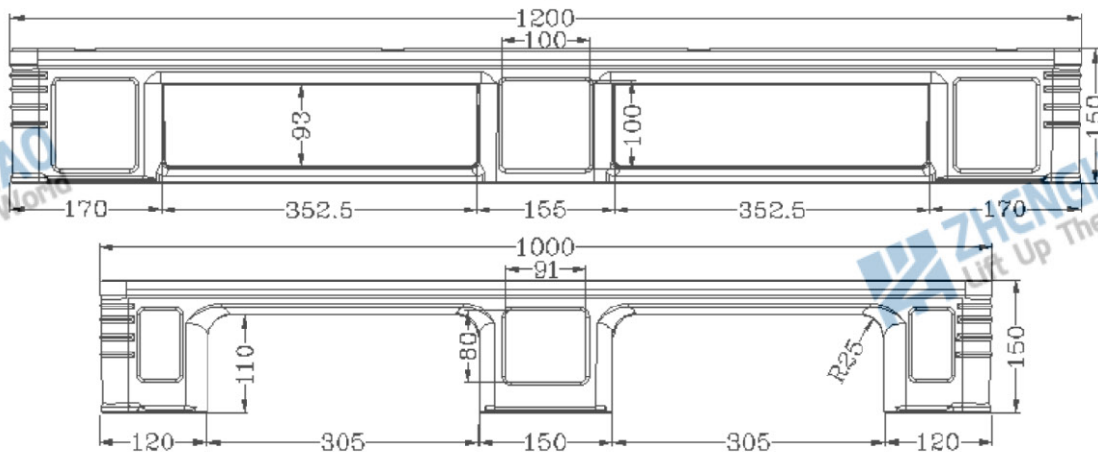
### 1. Design renderings :



### 2. Basic parameter table:

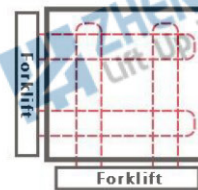
Dimensions (mm)	1200(length) × 1000(width) × 150 (height), jack height: 110		
Design load	Static load: 6 tons	Dynamic load: 1.5tons	Shelf Load: 1 ton
Main raw materials	New High-density Polyethylene (HDPE)		
Operating temperature	-35℃~+75℃		
Product color	Blue ( other by mutual agreement )		
Structure and process	Top deck (cargo surface )	Flat plate	
	Bottom structure	Three legs	
	Product Enhancements	Face	6 steel pipes, Optional according to need
		Bottom	No steel pipes
	Processing technology	Injection welding molding	

### 3. Fork hole size :



### 4. Product features:

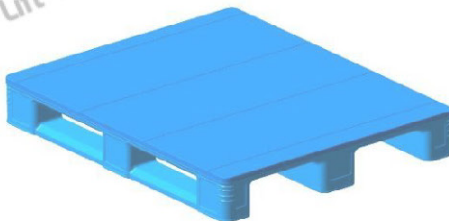
1) Designed according to the dimensions recommended by national standards , it has strong versatility , single-sided use , four-way fork entry type , Sichuan-shaped structure , and a grid design on the cargo surface , which is conducive to heat dissipation and dust removal . It is suitable for medical equipment, food industry stackers , conveyors, forklifts, and pallet trucks.



Four-sided fork diagram

2) It uses brand new high-density polyethylene (HDPE) material, which is non-toxic, harmless, non-absorbent, moisture-proof and mildew-proof, nail-free and thorn-free, safe and hygienic, and recyclable, replacing wooden pallets.

3) The product is designed with anti-collision ribs at the four corners to ensure the performance requirements of the corner drop test.

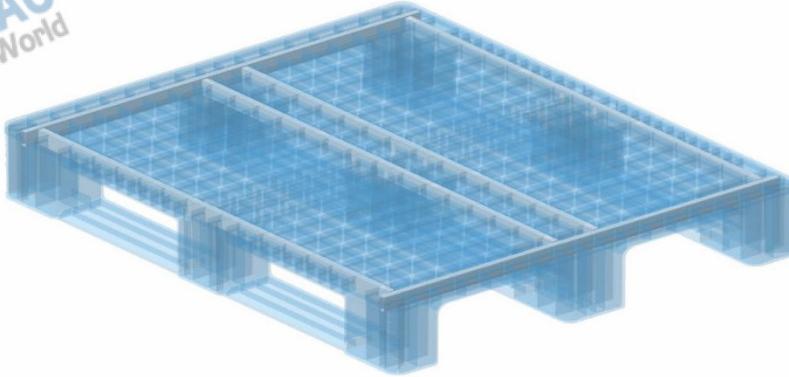


4) There are grooves around the pallet for sticking barcodes. The four sides of the pallet are engraved or silk-screened with words. The fonts are located in the center of each side of the pallet, and there is a time clock.

### 5. Product Advantages:

### 1) Improved load-bearing performance of pallets

The pallet surface is reinforced with steel pipes in four directions, ensuring the strength of the pallet when it is lifted by forks such as forks of forklifts or stackers from four directions, preventing the pallet from breaking due to the lack of steel pipe reinforcement in one direction, and effectively improving the safety performance of the pallet in high-speed AS/RS.



### 2) Compatibility of pallets with other logistics equipment

The nine supporting points of the pallet's bottom foot adopt a flat plate design, which can effectively prevent the chains on the chain conveyor and roller conveyor from wearing the bottom of the pallet.

### 3) Description of the sanitation of the pallet

This plastic pallet adopts a fully enclosed, pure flat manufacturing process, incorporating the concept of sanitation requirements for special industries. The pallet top and bottom panels are both flat, and there are no hygienic dead corners, so it can ensure that the pallet is free of pollutants and bacteria during use.

### 6. Product quality standards:

1) Appearance: The surface of the pallet is flat, without flash, cracks and deformation that affect use, without burrs on the edges, and the gate is flat.

2) Color: There is no obvious color difference on a single pallet, and the color of the same batch of products is basically the same.

3) Inspection standards:

Refer to GB/T15234-1994 "Plastic Flat Pallet", and requirements outside the standard shall be agreed upon by the supply and demand parties.