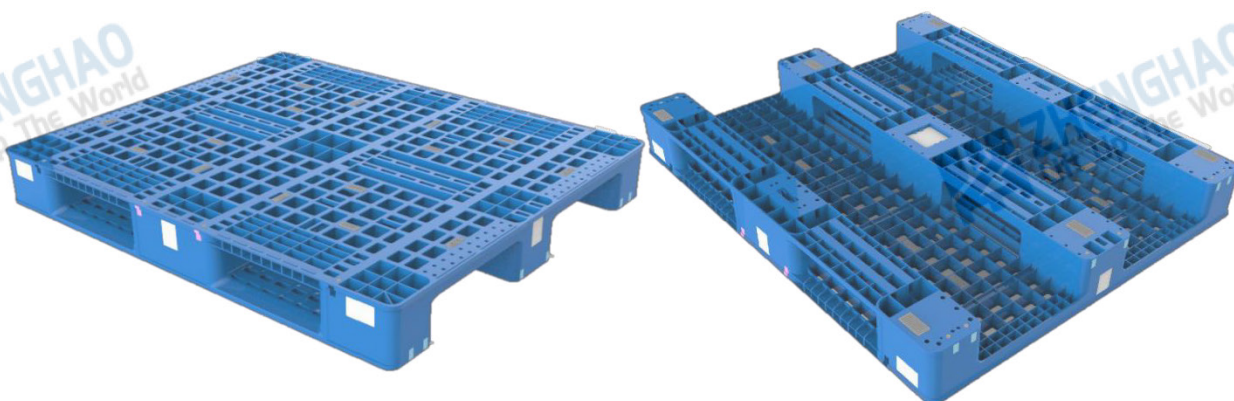


1210150B Introduction of grid racking plastic pallet

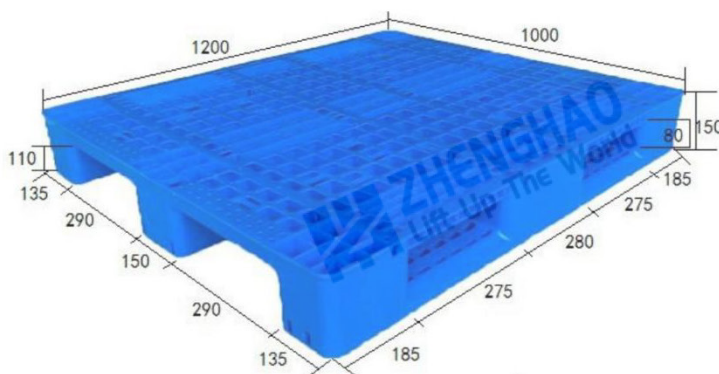
1. Design renderings :



2. Basic parameter table:

Dimensions	1200 mm (length) × 1000 mm (width) × 150 mm (height) , socket height: 110 mm		
Design load	Static load: 4 tons	Dynamic load: 1 ton	Shelf load : 0.3 tons , deformation ≤ 6 mm
Main raw materials	New high-density polyethylene (HDPE)		
Operating temperature	-25 °C ~ + 60 °C		
Product color	Blue (other by mutual agreement)		
Structure and process	Top deck (cargo surface)	Grid	
	Bottom structure	Three Legs	
	Product Enhancements	Face	None (Steel pipes can be added according to demand)
		Bottom	None (Steel pipes can be added according to demand)
	Processing technology	One-piece injection molding	

3. Fork hole size:

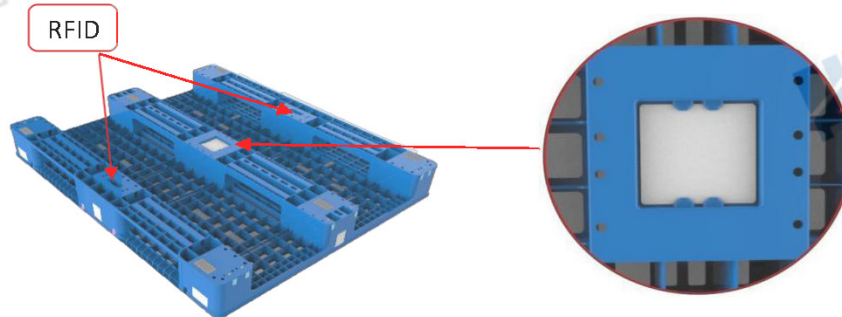


4.Product features:

1)The product has strong versatility, single-sided use, four-way fork type, Sichuan-shaped structure, and a flat loading surface , which is easy to clean . It is suitable for medical equipment , food industry stackers , conveyors , forklifts , and pallet handling. Car work .

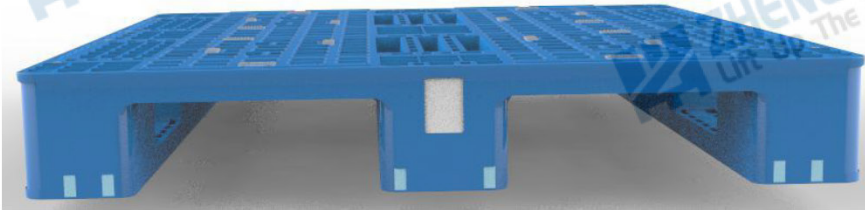
2) Made of high-density polyethylene (HDPE) plastic , it is non-toxic , harmless, non-absorbent , moisture-proof and mildew - proof , and has no nails or thorns.Safe, hygienic, recyclable, and can replace wooden pallets .

3)There is a RFID Chip card slot , to meet A G V Handling , the center of the bottom of the pallet needs to be The groove is designed to meet the requirements of QR code pasting . Groove size 85 x 85 mm . Deep 10 mm .

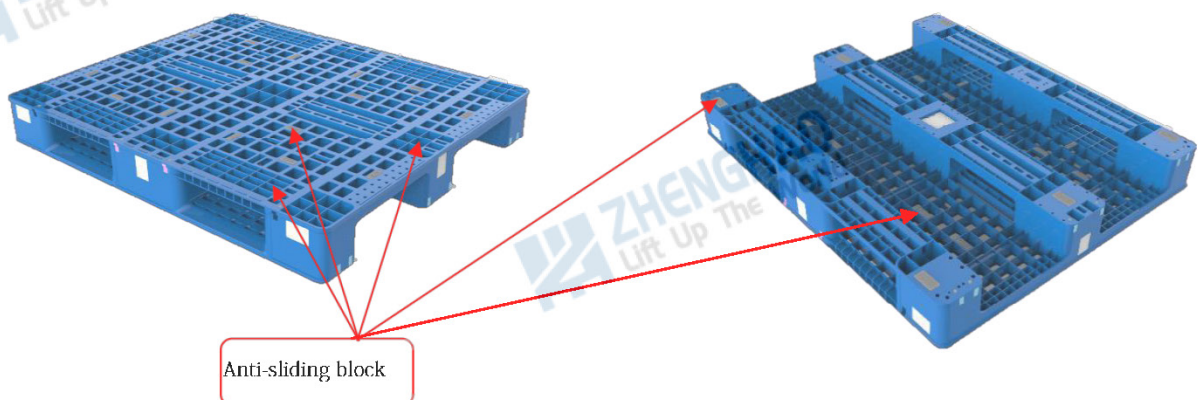


4)The upper and lower parts of the tray can be placed 10 The internal steel pipes are placed crosswise up and down to meet the product shelf load requirements .Suitable for pallet manual hydraulic trucks on flat ground and forklifts in space transportation , can be used in stereoscopic warehouses to improve Carrying capacity .

5)The product has flanged edges all around , which can also fix the pallet packaging wrapping film .



6)The bottom of the pallet is equipped with an anti-slip block to improve the anti - slip performance of empty pallets when they are stacked on the conveyor . The contact surface between the pallet and the fork and the upper and lower sides of the pallet are all designed with anti-slip . Packages, bare pallet groups) do not slip when transported on conveying equipment and stackers ;



5. Usage requirements:

- 1) Plastic pallets should be placed gently to avoid uneven force when landing, which may cause damage ;
- 2) When placing goods , they should be placed evenly to avoid sideways tilting during lifting and transportation.

6. Maintenance and care:

- 1) Plastic pallets should be kept away from sunlight to avoid aging and shortening their service life ;
- 2) It is strictly forbidden to throw goods from a high place into the plastic pallet . Reasonably determine the stacking method of goods in the pallet . The goods should be placed evenly , not concentrated or eccentrically . The pallet carrying heavy objects should be placed on a flat ground or surface .
- 3) It is strictly forbidden to drop plastic pallets from a height to avoid breaking the pallets due to violent impact ;
- 4) When using a forklift or manual hydraulic truck, the fork should be placed as close to the outside of the fork hole of the pallet as possible, and the fork should be fully inserted into the pallet. The angle can be changed only after the pallet is lifted steadily. The fork should not hit the side of the pallet to avoid breaking or cracking the pallet.
- 5) Cleaning oil stains: When there are stains on the surface of the plastic pallet that are difficult to wash off, you can choose to dilute professional sodium hydroxide and soak it (it is recommended to use: Carpoly's benzene-free environmentally friendly net washing water), and then scrub it with a rag. Generally, it is not recommended to use a stainless steel cleaning ball for scrubbing. The steel wire is relatively hard, and scrubbing hard will scratch the surface of the plastic pallet .

7. Product quality standards:

- 1) Appearance: The surface of the pallet is flat, without flash, cracks and deformation that affect use, without burrs on the edges, and the gate is flat.
- 2) Color: There is no obvious color difference on a single pallet, and the color of the same batch of products is basically the same.
- 3) Inspection standards:

Refer to GB/T15234-1994 "Plastic Flat Pallet", and requirements outside the standard shall be agreed upon by the supply and demand parties.