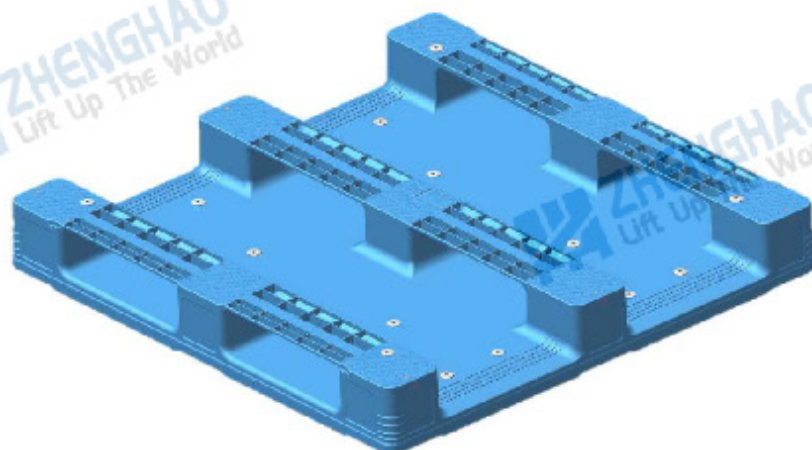
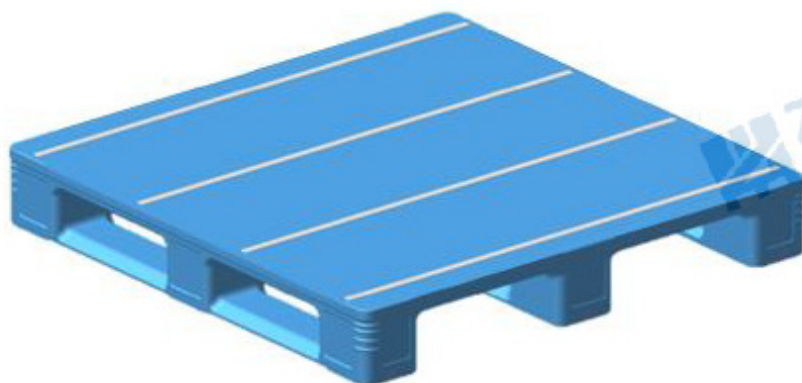


1210165B Introduction of solid racking plastic pallet

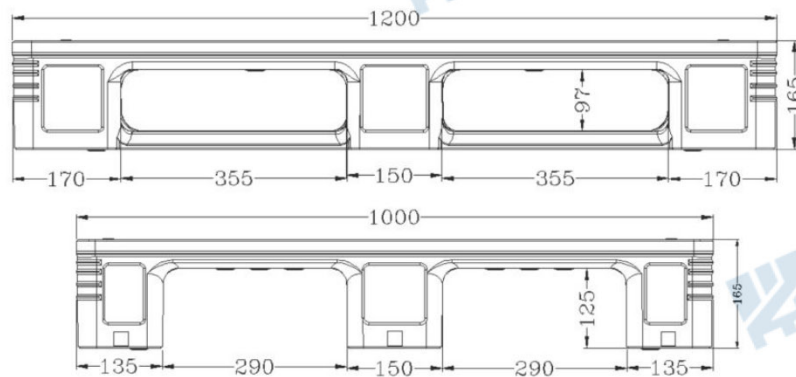
1. Design renderings :



2. Basic parameter table:

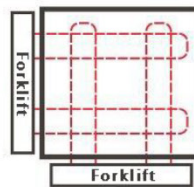
Dimensions	1200mm (length)×1000 mm (width)×165 mm (height) socket height : 125 mm		
Design load	Static load : 6 tons	Dynamic load: 1.5 tons	Shelf Load: 1 tons Deformation ≤ 6 mm
Total mass (weight)	2 3.5 ± 0.5kg (Built-in steel pipe)		
Main raw materials	New high density polyethylene (HDPE)		
Operating temperature	-25 °C ~ + 40 °C		
Product color	Blue (other by mutual agreement)		
Structure and process	Top desk (cargo surface)	Flat	
	Bottom structure	Three legs	
	Product Enhancements	Face	Steel pipe 4 root
		Bottom	Steel pipe 3 root
	Processing technology	Injection molding, heat fusion welding	

3. Fork hole size :



4. Product features :

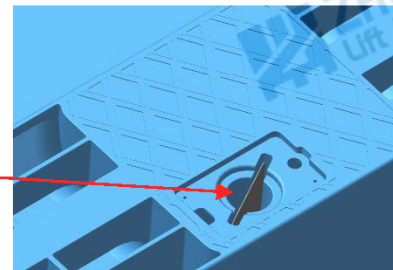
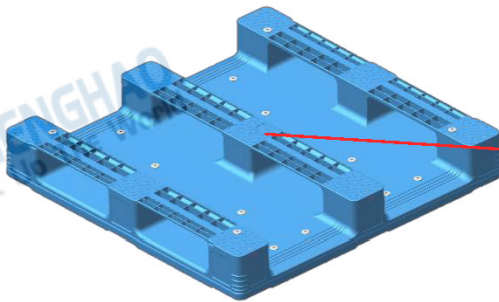
1) Designed according to the dimensions recommended by national standards , it has strong versatility , single-sided use , four-way fork entry type , Sichuan-shaped structure , and a double-smooth design for the loading surface, which is conducive to hygiene and cleaning . It is suitable for medical equipment, food industry stackers , conveyors, forklifts, and pallet trucks.



Four-sided fork diagram

2) It uses brand new high-density polyethylene (HDPE) material, which is non- toxic , harmless, non-absorbent, moisture-proof and mildew-proof, nail-free and thorn-free , safe and hygienic, and recyclable, replacing wooden pallets.

3) The bottom of the tray has RFID Chip card slot;

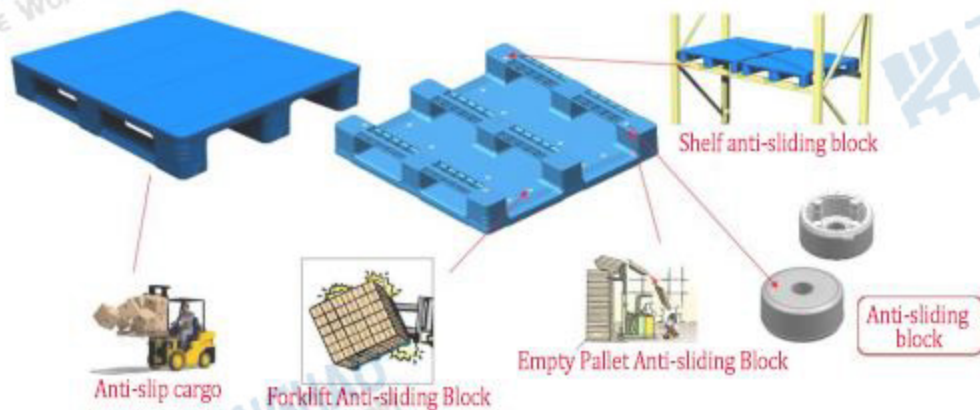


4) The product is designed with anti-collision ribs at the four corners to ensure the performance requirements of corner drop tests .



5) The bottom of the pallet is equipped with an anti-slip block to improve the anti-slip performance when the empty pallets are stacked and transported on the conveyor:

6) The contact surface between the pallet and the fork, as well as the upper and lower sides of the pallet, are all designed to prevent slipping, ensuring that materials (bare pallets, pallet packaging, bare pallet groups) do not slip when being transported on conveying equipment and stackers.



7) There are grooves for sticking barcodes around the tray. The four sides of the tray are engraved or silk-screened with words. The fonts are located in the center of each side of the tray, and there is a time clock.

5. Product advantages :

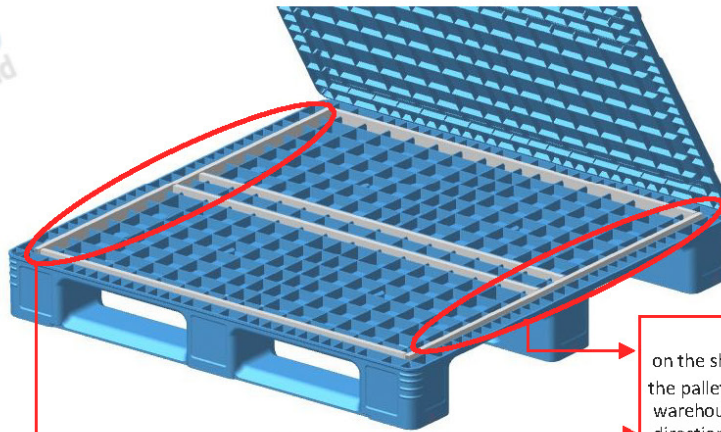
1) Advantages of improving the load-bearing performance of pallets a) Improvement of the performance of pallets when used in automatic stackers: The pallet surface is reinforced with steel pipes in four directions, ensuring the strength of the pallet from four directions when it is picked up by forks such as forks of forklifts or stackers, preventing the pallet from breaking due to the lack of steel pipe reinforcement in one direction, and effectively improving the pallet's performance in high-speed operation. AS/RS Safety performance in.



2) Deformation of the pallet:

a) The pallet has its feet built into the closed direction. 3 The steel pipe effectively enhances the load-bearing capacity of the pallet, ensuring that the deformation of the long side of the pallet is $\leq 6\text{mm}$ when operating at high speed in the stereoscopic warehouse, thereby ensuring the safety of the goods on the pallet.

b) Place a total of 6 Steel pipes (4 pipes can be selected, in a "mouth" shape) to ensure the opening direction of the pallet when it is running at high speed in the stereoscopic warehouse the deformation is guaranteed to be $\leq 5\text{mm}$.



3) Compatibility of pallets with other logistics equipment

a) The height of the fork hole of the pallet is 125 mm Can meet domestic The forks of the AS/RS (automated high-rise warehouse) double-lift stacker can move in and out freely, and the remaining margin can effectively ensure the safety of the pallet in the automated high-rise warehouse.

b) The nine supporting points of the pallet's bottom foot adopt a flat plate design, which can effectively prevent the chains on the chain conveyor and roller conveyor from wearing the bottom of the pallet.

c) Steel pipes are built into the four sides of the pallet, and there is a 7 1 or 9 steel pipes can effectively control the deformation of the pallet when it is suspended at high speed, greatly ensuring the safety of goods in the warehouse.

4) Description of the sanitation of the pallet : This plastic pallet adopts a fully enclosed , pure flat manufacturing process , incorporating the concept of sanitation requirements for special industries . The pallet top and bottom panels are both flat , and there are no hygienic dead corners , so it can ensure that the pallet is free of pollutants and bacteria during use.

6. Product quality standards:

1) Appearance: The surface of the tray is smooth, without burrs, cracks and deformations that affect use, burrs on the edges, and the gate is flat.

2) There is no obvious color difference on a single pallet, and the color of the same batch of products is basically consistent .

3) Inspection standards

Reference GB/T 1523 4 - 1994 "Plastic Flat Pallets " , requirements outside the standard shall be agreed upon by the supplier and the buyer.